

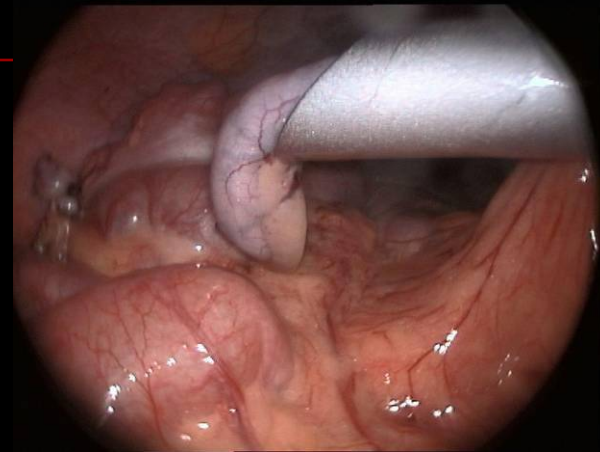
Laparoscopic Tissue Retrieval Techniques

R.K.Mishra



Tissue Retrieval Techniques

- Hide under port then come with port
- Use of tissue retrieval bag



You can make your own endobag with the sterilized Gloves



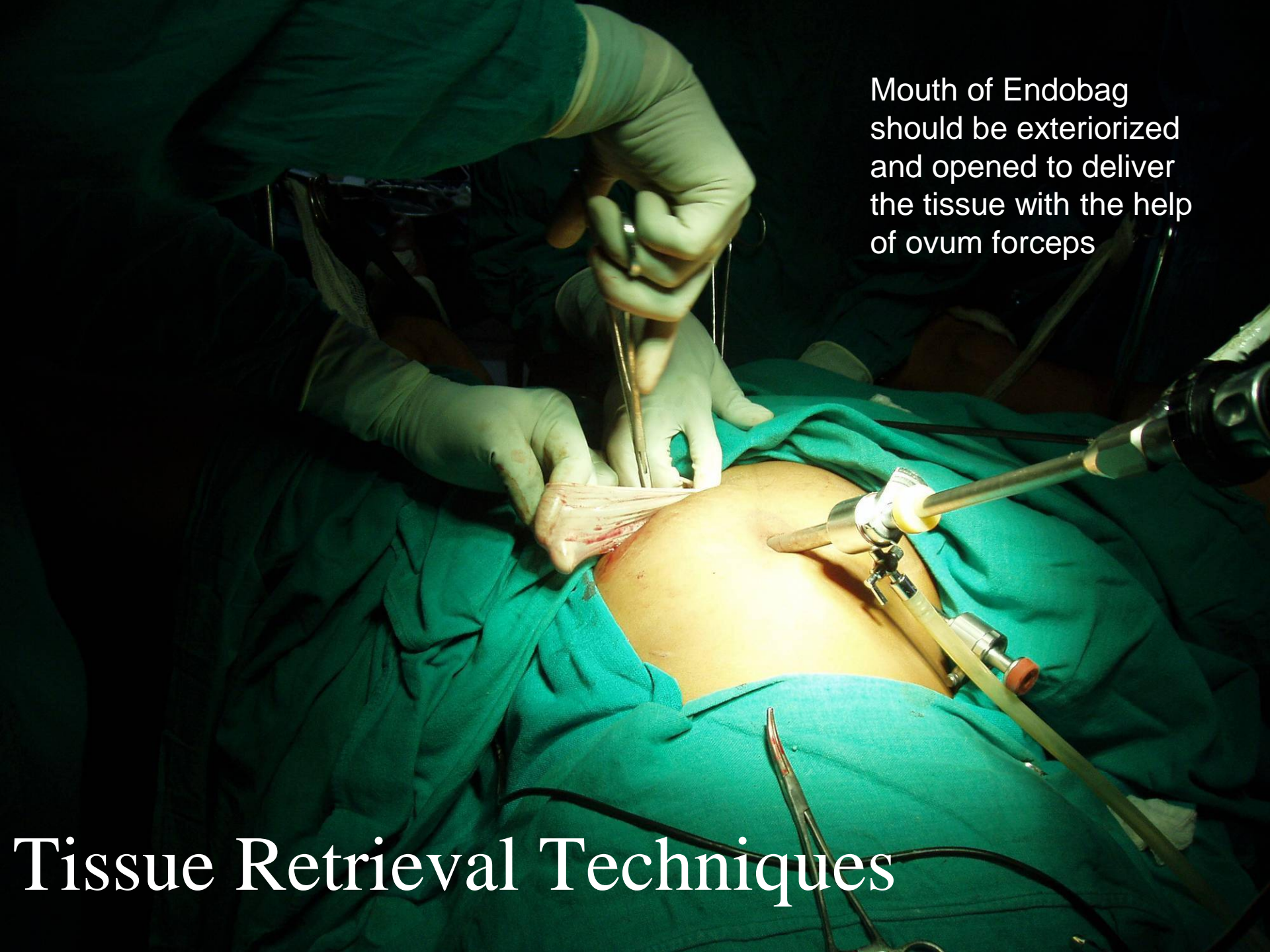
Tissue Retrieval Techniques

- Retrieval Bag must be used if there is suspicion of Infection or malignancy



Video demonstrating Use of Endobag



A surgical procedure is shown on a patient's abdomen. The patient is lying on their back, and the abdominal area is exposed. A surgical team, wearing green scrubs and white gloves, is performing the procedure. One hand is holding a pair of ovum forceps, which are being used to deliver tissue from the mouth of an Endobag. The Endobag is a large, clear, flexible bag that is inserted into the abdominal cavity. The surgical team is also using a laparoscopic instrument, which is a long, thin tube with a camera at the end, to assist in the procedure. The surgical site is illuminated by a bright light, and the surrounding area is covered with green surgical drapes.

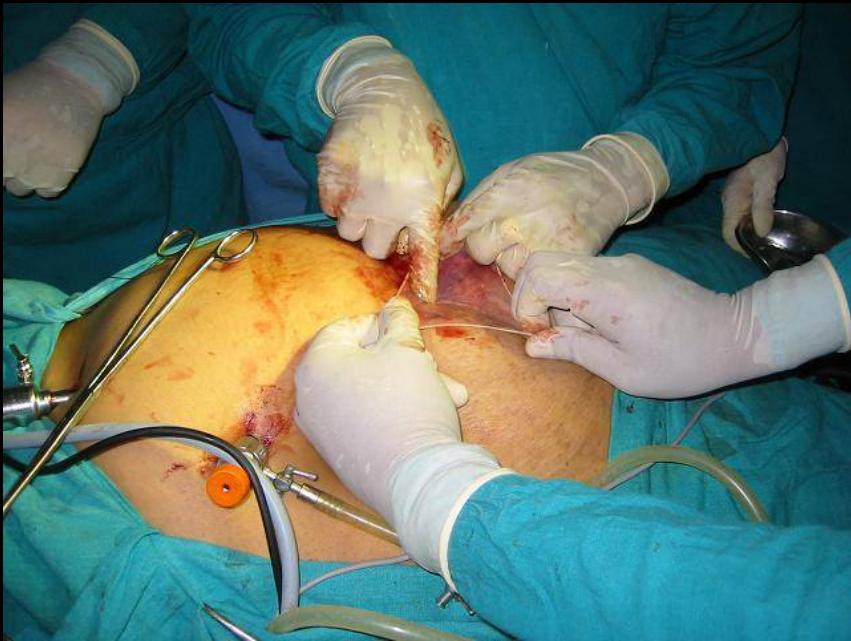
Mouth of Endobag
should be exteriorized
and opened to deliver
the tissue with the help
of ovum forceps

Tissue Retrieval Techniques

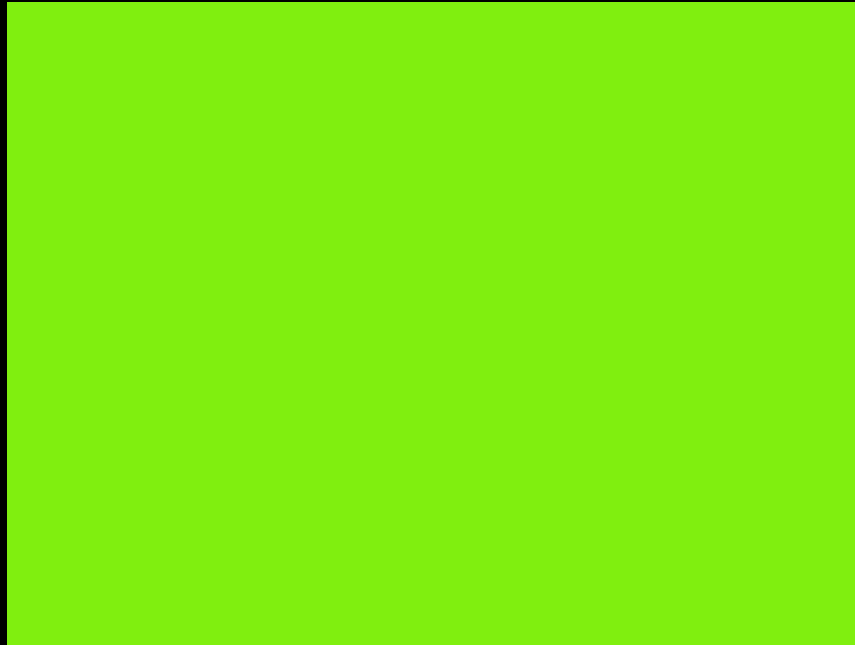
Extraction of tissue
from Endobag



Extraction of Perforated Gallbladder and spilled stones by help of Endobag



Condom



Video demonstrating use of condom for tissue retrieval



Commercial Endobag



Tissue Retrieval Techniques In Special Situations

- Colpotomy retrieval of tissue in female
- Counter pushing by other instruments
- Use of morcelator



Morcellator



Electrical morcellator



Morcellator



Electric
Morcellator



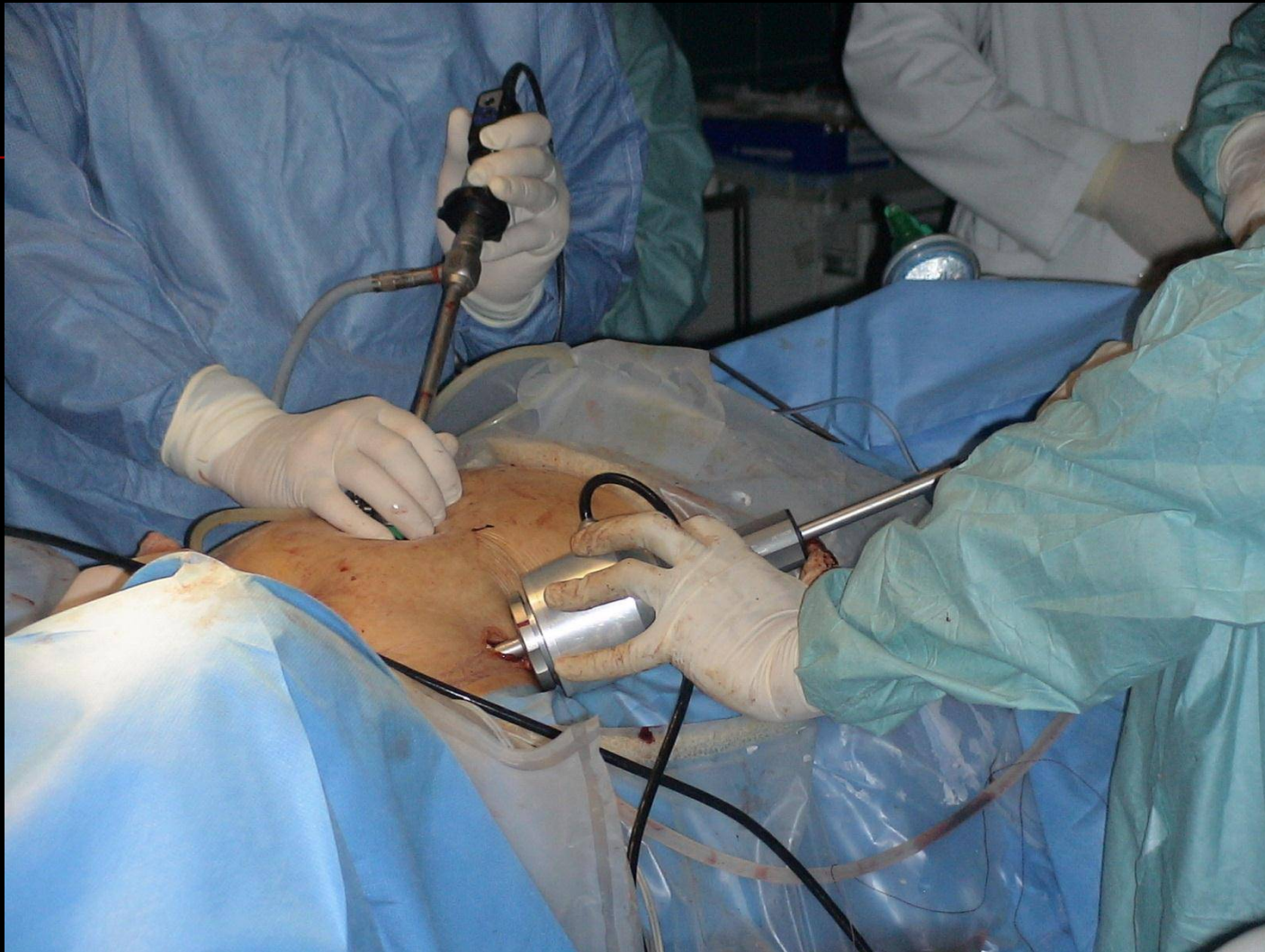
Morcellator



Morcellator



Morcellator



Morcellator





Morcellator



Video demonstrating use of Electric Morcellator



Morcellator



Video demonstrator of Electric Morcellator



Tissue Retrieval Techniques In Special Situations

■ HALS

Hand Assisted Laparoscopic Surgery



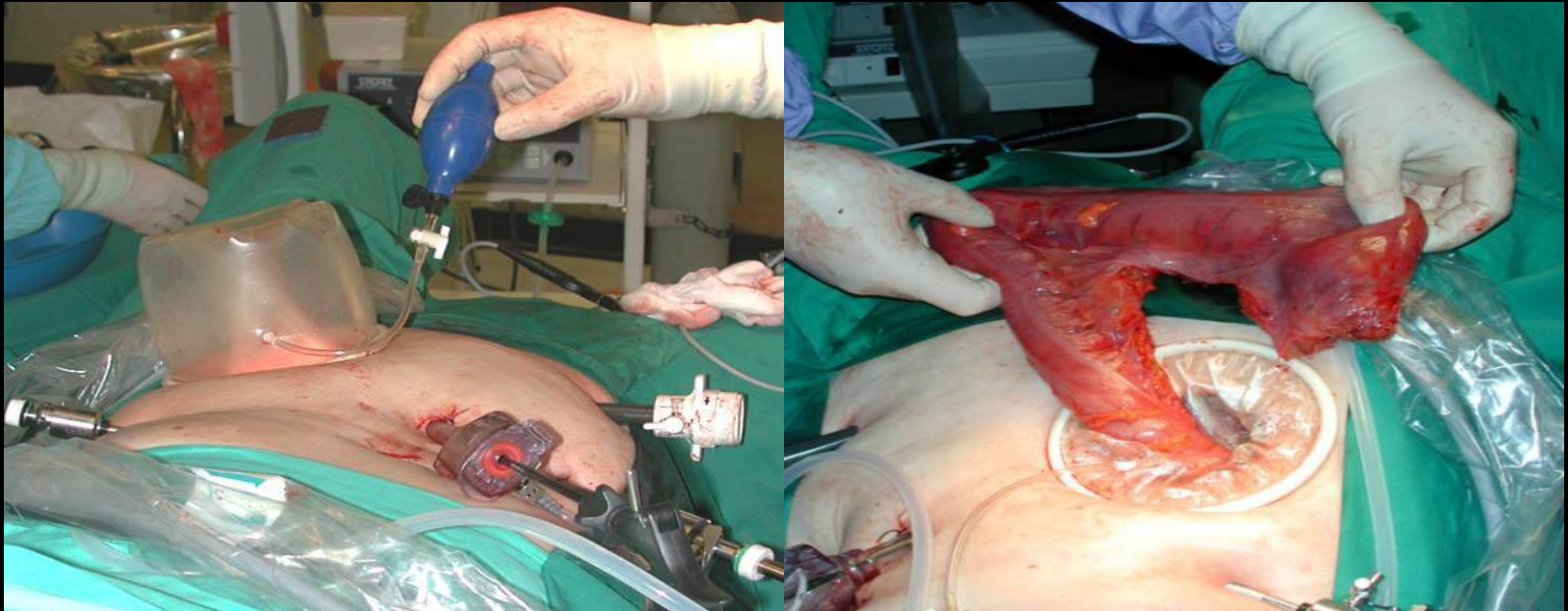
Omniport



Tissue Retrieval Techniques In Special Situations

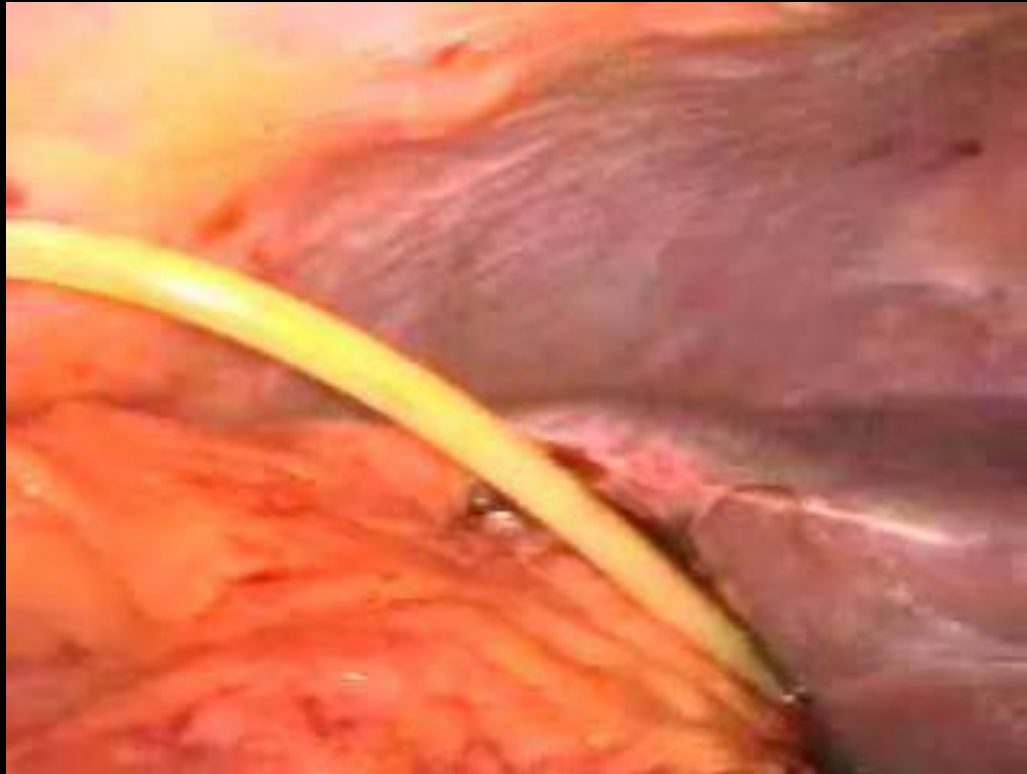
■ HALS

Hand Assisted Laparoscopic Surgery



Drainage

T Tube and Drainage Tube Application



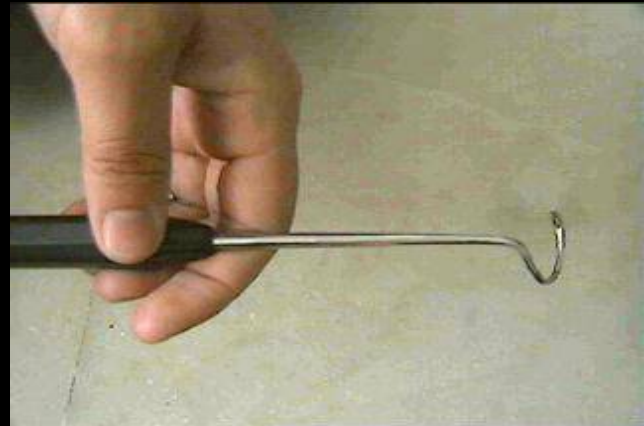
Port Closure



Video demonstrating use of suture passer for port closure



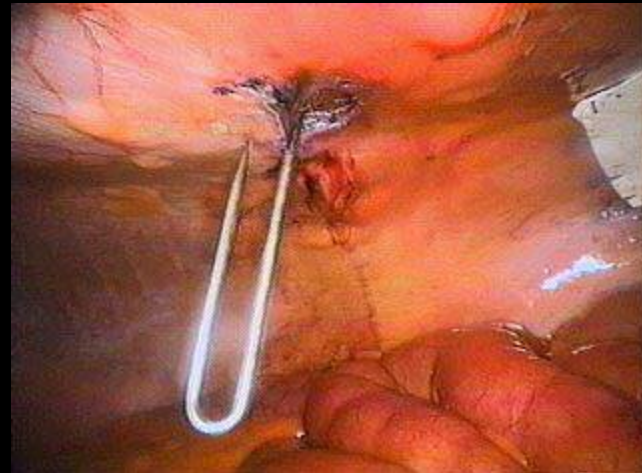
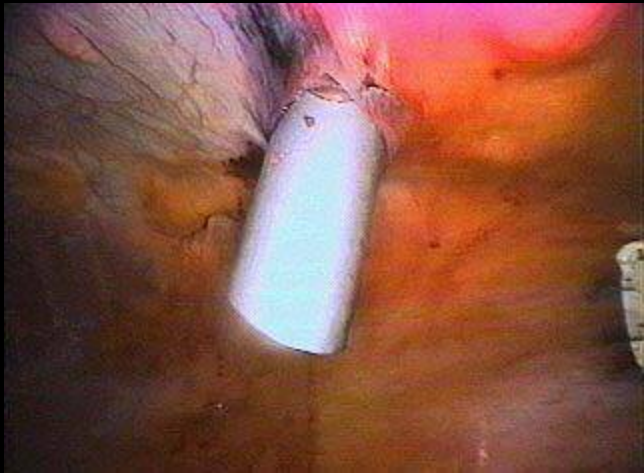
Port Closure



Various other port closure needles



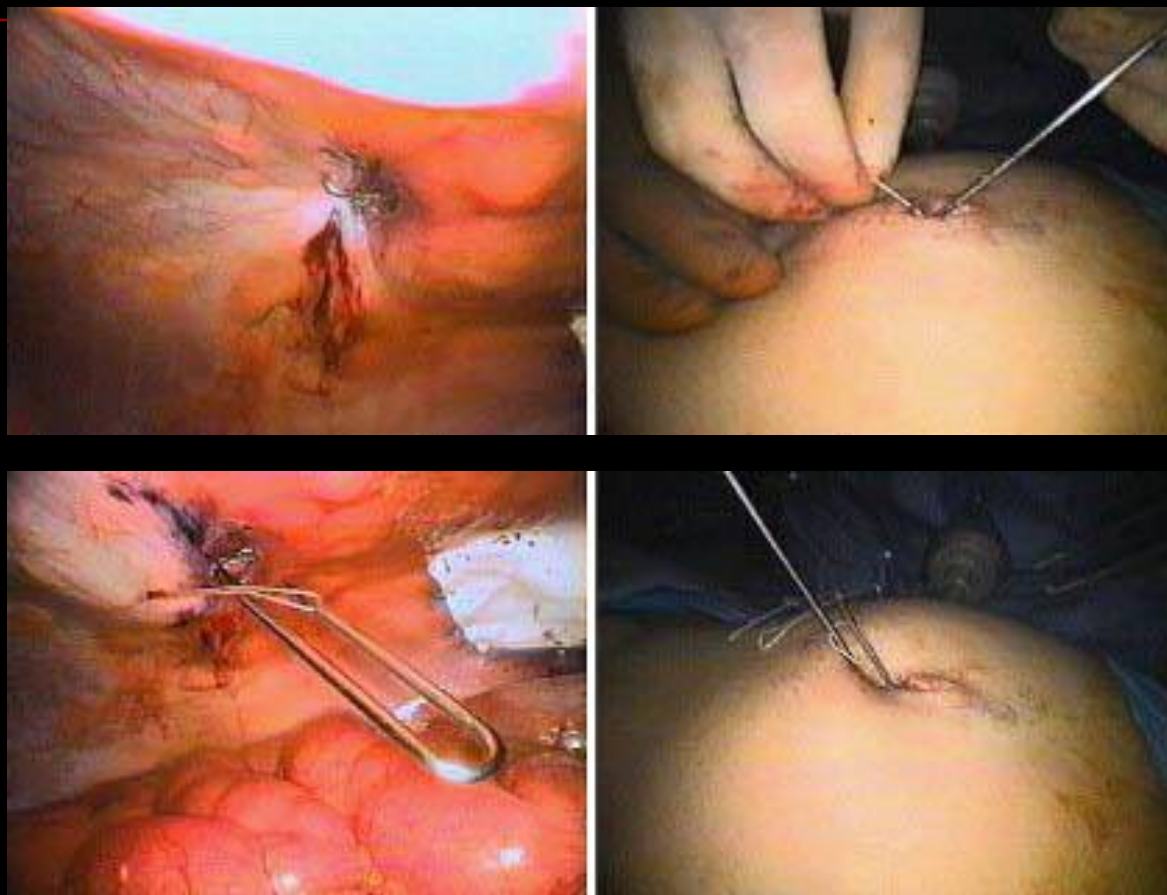
Port Closure



Various other port closure needles



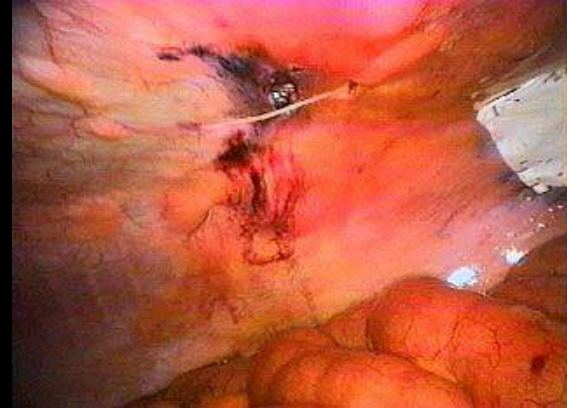
Port Closure



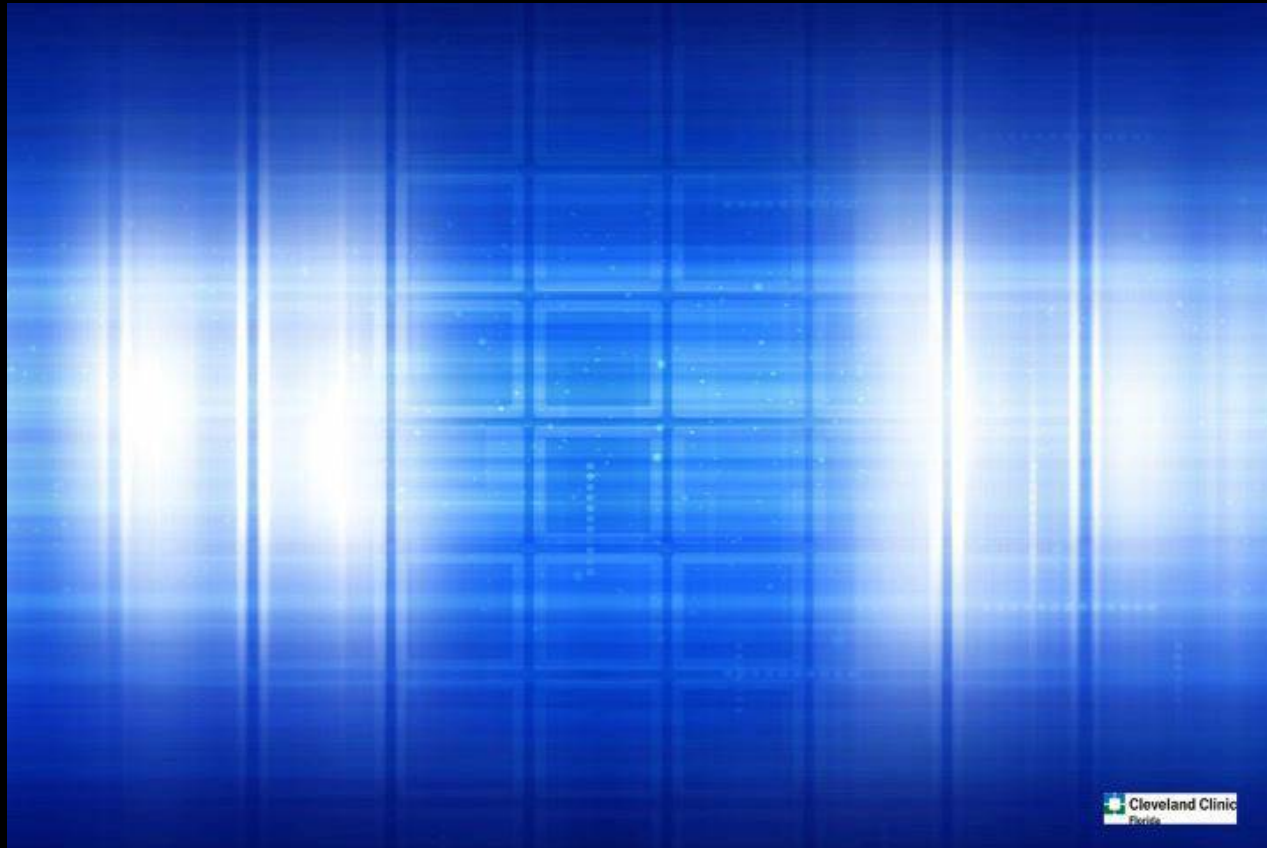
Port Closure



Cobblers needle for port closure



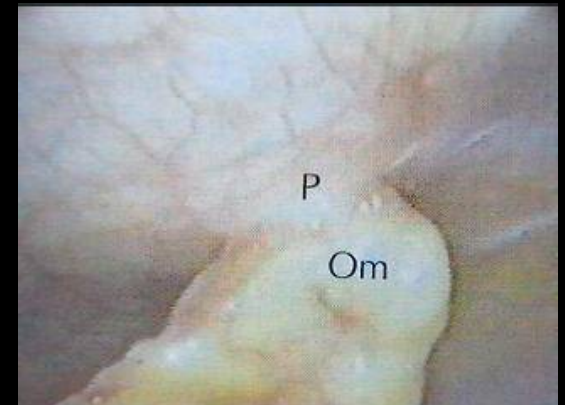
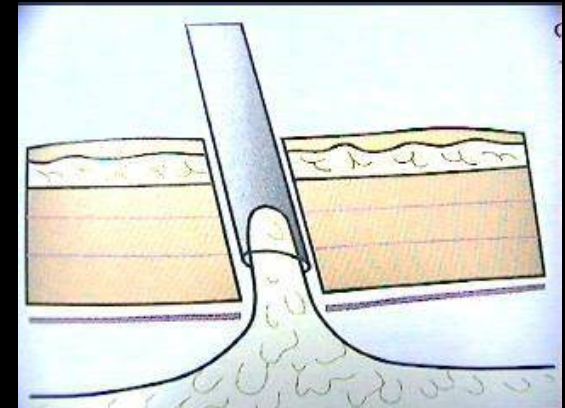
Neat Stitch



Removal of Instruments



Careful removal of optical port sliding over telescope to avoid adhesion due to sudden gush of CO₂



Repair of Port Wound



Repair of abdominal wound should be always under vision to avoid adhesion



Wound Closure



Wound Closure by subcuticular stitches



Have A Safer Access

Thank you



Prof. Sir Alfred Cuschieri Presenting Gift to Dr. Mishra

